

阅读申明

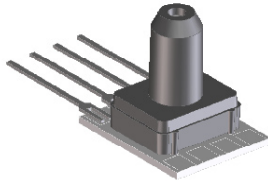
- 1.本站收集的数据手册和产品资料都来自互联网，版权归原作者所有。如读者和版权方有任何异议请及时告之，我们将妥善解决。
- 2.本站提供的中文数据手册是英文数据手册的中文翻译，其目的是协助用户阅读，该译文无法自动跟随原稿更新，同时也可能存在翻译上的不当。建议读者以英文原稿为参考以便获得更精准的信息。
- 3.本站提供的产品资料，来自厂商的技术支持或者使用者的心得体会等，其内容可能存在描述上的差异，建议读者做出适当判断。
- 4.如需与我们联系，请发邮件到marketing@iczoom.com，主题请标有“数据手册”字样。

Read Statement

1. The datasheets and other product information on the site are all from network reference or other public materials, and the copyright belongs to the original author and original published source. If readers and copyright owners have any objections, please contact us and we will deal with it in a timely manner.
2. The Chinese datasheets provided on the website is a Chinese translation of the English datasheets. Its purpose is for reader's learning exchange only and do not involve commercial purposes. The translation cannot be automatically updated with the original manuscript, and there may also be improper translations. Readers are advised to use the English manuscript as a reference for more accurate information.
3. All product information provided on the website refer to solutions from manufacturers' technical support or users the contents may have differences in description, and readers are advised to take the original article as the standard.
4. If you have any questions, please contact us at marketing@iczoom.com and mark the subject with "Datasheets" .

MINIATURE PRESSURE SENSORS

C-Grade
Pressure Sensors



Features

- 0 to 4" H₂O to 0 to 100 PSI Pressure Ranges
- 1 % linearity version
- Temperature Compensated
- Calibrated Zero and Span

Applications

- Medical Instrumentation
- Environmental Controls
- HVAC

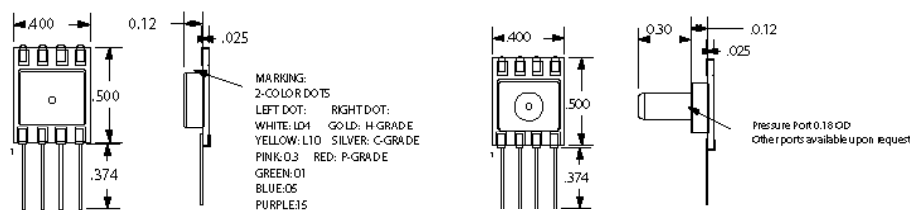
General Description

The Miniature series pressure sensors are based upon a proprietary technology to reduce the size of the sensor and yet maintain a high level of performance. This model provides a calibrated millivolt output with superior output offset characteristics. Output offset errors due to change in temperature, stability to warm-up, stability to long time period, and position sensitivity are all significantly reduced when compared to conventional compensation methods. In addition the sensor utilizes a silicon, micromachined, stress concentration enhanced structure to provide a very linear output to measured pressure.

These calibrated and temperature compensated sensors give an accurate and stable output over a wide temperature range. This series is intended for use with non-corrosive, non-ionic working fluids such as air, dry gases and the like. The C-GRADE is a lowest cost version of the millivolt output pressure sensors.

The output of the device is ratiometric to the supply voltage and operation from any D.C. supply voltage.

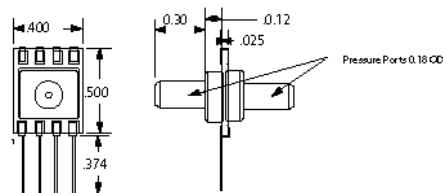
Physical Dimensions



No Pressure Port

Single Pressure Port

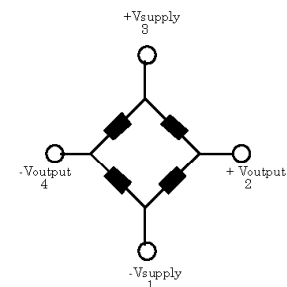
Marking:
right dot: Silver C-Grade
left dot:
L04: white
L10: yellow
0.3: pink
1.0: green
05: blue
15: purple
30: orange
100: brown



Dual Pressure Port

all dimensions in inches

Equivalent Circuit



Input Resistance 5.0 k ohm

Output Resistance 3.0 k ohm

Approvals

MKT	DATE	MFG	DATE	ENG	DATE	QA	DATE
<input type="checkbox"/> As Is <input type="checkbox"/> With Change		<input type="checkbox"/> As Is <input type="checkbox"/> With Change		<input type="checkbox"/> As Is <input type="checkbox"/> With Change		<input type="checkbox"/> As Is <input type="checkbox"/> With Change	



Pressure Sensor Characteristics Maximum Ratings

Supply Voltage VS	16 Vdc
Common-mode pressure	50 psig
Lead Temperature (soldering 2-4 sec.)	250°C

Environmental Specifications

Temperature Ranges	
Compensated	0 to 70° C
Operating	-25 to 85° C
Storage	-40 to 125° C
Humidity Limits	0 to 95% RH (non condensing)

Standard Pressure Ranges

No Pressure Port		Single Pressure Port		Dual Pressure Port	
Part Number	Operating Pressure	Part Number	Part Number	Part Number	Proof Pressure
4 INCH-G-CGRADE-MINI	0 - 4 "H2O	4 INCH-GF-CGRADE-MINI	4 INCH-D-CGRADE-MINI	4 INCH-D-CGRADE-MINI	3 PSI
0.3 PSI-G-CGRADE-MINI	0 - 0.3 PSI	0.3 PSI-GF-CGRADE-MINI	0.3 PSI-D-CGRADE-MINI	0.3 PSI-D-CGRADE-MINI	3 PSI
10 INCH-G-CGRADE-MINI	0 - 10 "H2O	10 INCH-GF-CGRADE-MINI	10 INCH-D-CGRADE-MINI	10 INCH-D-CGRADE-MINI	5 PSI
1 PSI-G-CGRADE-MINI	0 - 1 PSI	1 PSI-GF-CGRADE-MINI	1 PSI-D-CGRADE-MINI	1 PSI-D-CGRADE-MINI	10 PSI
5 PSI-G-CGRADE-MINI	0 - 5 PSI	5 PSI-GF-CGRADE-MINI	5 PSI-D-CGRADE-MINI	5 PSI-D-CGRADE-MINI	20 PSI
15 PSI-A-CGRADE-MINI	0 - 15 PSIA	15 PSI-AF-CGRADE-MINI			60 PSI
15 PSI-G-CGRADE-MINI	0-15 PSI	15 PSI-GF-CGRADE-MINI	15 PSI-D-CGRADE-MINI	15 PSI-D-CGRADE-MINI	60 PSI
30 PSI-A-CGRADE-MINI	0-30 PSIA	30 PSI-AF-CGRADE-MINI			60 PSI
30 PSI-G-CGRADE-MINI	0-30 PSI	30 PSI-GF-CGRADE-MINI	30 PSI-D-CGRADE-MINI	30 PSI-D-CGRADE-MINI	60 PSI
100 PSI-G-CGRADE-MINI	0-100 PSI	100 PSI-GF-CGRADE-MINI			150 PSI

Performance Characteristics for 4 INCH-G-CGRADE-MINI

Parameter, note 1	Minimum	Nominal	Maximum	Units
Operating Range, differential pressure	--	4.0	--	"H2O
Output Span, note 5	23	25	27	mV
Offset Voltage @ zero differential pressure	--	--	±1.5	mV
Offset Temperature Shift (0°C-50°C), note 2	--	--	±1.5	mV
Linearity, hysteresis error, note 4	--	0.5	1.0	%fs
Span Shift (0°C-50°C), note 2	--	--	±2	%fs

Performance Characteristics for 10 INCH-G-CGRADE-MINI

Parameter, note 1	Minimum	Nominal	Maximum	Units
Operating Range, differential pressure	--	10.0	--	"H2O
Output Span, note 5	18	20	22	mV
Offset Voltage @ zero differential pressure	--	--	±1.5	mV
Offset Temperature Shift (0°C-70°C), note 2	--	--	±1.5	mV
Linearity, hysteresis error, note 4	--	0.5	1.0	%fs
Span Shift (0°C-70°C), note 2	--	--	±2	%fs

Performance Characteristics for 0.3 PSI-G-CGRADE-MINI

Parameter, note 1	Minimum	Nominal	Maximum	Units
Operating Range, differential pressure	--	0.3	--	PSI
Output Span, note 5	18	20.0	22	mV
Offset Voltage @ zero differential pressure	--	--	±1	mV
Offset Temperature Shift (0°C-70°C), note 2	--	--	±1	mV
Linearity, hysteresis error, note 4	--	0.5	1	%fs
Span Shift (0°C-70°C), note 2	--	--	±2	%fs

Performance Characteristics for 1 PSI-G-CGRADE-MINI

Parameter, note 1	Minimum	Nominal	Maximum	Units
Operating Range, differential pressure	--	1.0	--	PSI
Output Span, note 5	16	18	20	mV
Offset Voltage @ zero differential pressure	--	--	±1	mV
Offset Temperature Shift (0°C-70°C), note 2	--	--	±1	mV
Linearity, hysteresis error, note 4	--	0.5	1.0	%fs
Span Shift (0°C-70°C), note 2	--	--	±2	%fs

Performance Characteristics for 5 PSI-G-CGRADE-MINI

Parameter, note 1	Minimum	Nominal	Maximum	Units
Operating Range, differential pressure	--	5.0	--	PSI
Output Span, note 5	57	60	63	mV
Offset Voltage @ zero differential pressure	--	--	±1	mV
Offset Temperature Shift (0°C-70°C), note 2	--	--	±1	mV
Linearity, hysteresis error, note 4	--	0.5	1.0	%fs
Span Shift (0°C-70°C), note 2	--	--	±2	%fs

Performance Characteristics for 15 PSI-G-CGRADE-MINI

Parameter, note 1	Minimum	Nominal	Maximum	Units
Operating Range, gage pressure	--	15.0	--	PSI
Output Span, note 5	85	90.0	95	mV
Offset Voltage @ zero gage pressure	--	--	±1	mV
Offset Temperature Shift (0°C-70°C), note 2	--	--	±1	mV
Linearity, hysteresis error, note 4	--	0.5	1.0	%fs
Span Shift (0°C-70°C), note 2	--	--	±2	%fs



Performance Characteristics for 15 PSI-A-CGRADE-MINI

Parameter, note 1	Minimum	Nominal	Maximum	Units
Operating Range, absolute pressure	--	15.0	--	PSIA
Output Span, note 5	85	90.0	95	mV
Offset Voltage @ zero absolute pressure	--	--	±1	mV
Offset Temperature Shift (0°C-70°C), note 2	--	--	±1	mV
Linearity, hysteresis error, note 4	--	0.5	1.0	%fs
Span Shift (0°C-70°C), note 2	--	--	±2	%fs

Performance Characteristics for 30 PSI-G-CGRADE-MINI

Parameter, note 1	Minimum	Nominal	Maximum	Units
Operating Range, gage pressure	--	30.0	--	PSI
Output Span, note 5	85	90.0	95	mV
Offset Voltage @ zero pressure	--	--	±1	mV
Offset Temperature Shift (0°C-70°C), note 2	--	--	±1	mV
Linearity, hysteresis error, note 4	--	0.5	1.0	%fs
Span Shift (0°C-70°C), note 2	--	--	±2	%fs

Performance Characteristics for 30 PSI-A-CGRADE-MINI

Parameter, note 1	Minimum	Nominal	Maximum	Units
Operating Range, absolute pressure	--	30.0	--	PSIA
Output Span, note 5	85	90.0	95	mV
Offset Voltage @ zero absolute pressure	--	--	±1	mV
Offset Temperature Shift (0°C-70°C), note 2	--	--	±1	mV
Linearity, hysteresis error, note 4	--	0.5	1.0	%fs
Span Shift (0°C-70°C), note 2	--	--	±2	%fs

Performance Characteristics for 100 PSI-G-CGRADE-MINI

Parameter, note 1	Minimum	Nominal	Maximum	Units
Operating Range, gage pressure	--	100.0	--	PSI
Output Span, note 5	95	100.0	105	mV
Offset Voltage @ zero pressure	--	--	±1	mV
Offset Temperature Shift (0°C-70°C), note 2	--	--	±1	mV
Linearity, hysteresis error, note 4	--	0.5	1.0	%fs
Span Shift (0°C-70°C), note 2	--	--	±2	%fs

Specification Notes

NOTE 1: ALL PARAMETERS ARE MEASURED AT 12.0 VOLT EXCITATION, FOR THE NOMINAL FULL SCALE PRESSURE AND ROOM TEMPERATURE UNLESS OTHERWISE SPECIFIED. PRESSURE MEASUREMENTS ARE WITH POSITIVE PRESSURE APPLIED TO PORT B.

NOTE 2: SHIFT IS RELATIVE TO 25°C.

NOTE 3: SHIFT IS WITHIN THE FIRST HOUR OF EXCITATION APPLIED TO THE DEVICE.

NOTE 4: MEASURED AT ONE-HALF FULL SCALE RATED PRESSURE USING BEST STRAIGHT LINE CURVE FIT.

NOTE 5: THE VOLTAGE ADDED TO THE OFFSET VOLTAGE AT FULL SCALE PRESSURE.

Pressure Response: for any pressure applied the response time to get to 90% of pressure applied is typically less than 100 useconds.